

# CONCRETE LCDA®

*Innovative solutions in concrete for interior design*

## — PRESENTATION PANBETON®

---

**CONCRETE LCDA®**

8 rue Copernic 49240 Avrillé - FRANCE

T. +33 (0) 2 41 33 99 10 F. +33 (0) 9 70 32 65 61

**CONTACT@CONCRETE-BETON.COM**

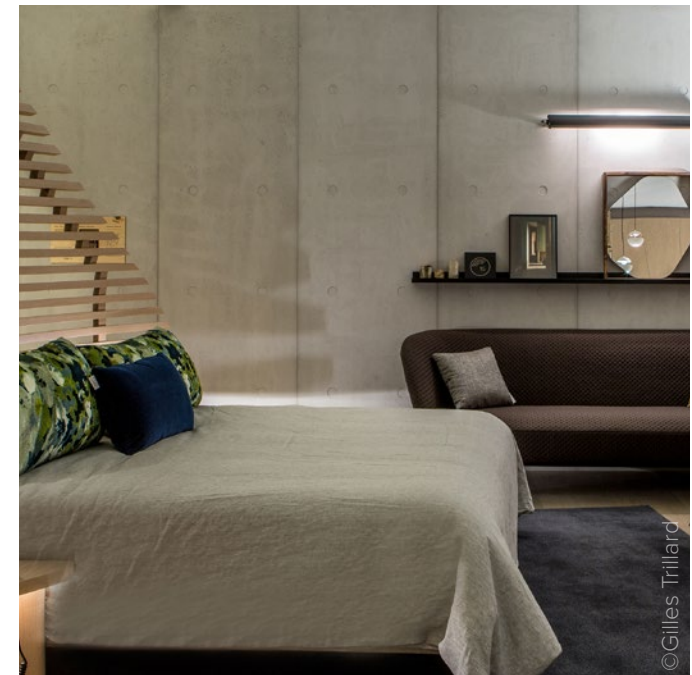
**WWW.CONCRETE-BETON.COM**



# PANBETON®

Panbeton® is a unique technology of ultra-lightweight concrete cladding. These slabs are quick and easy to install. It is the ideal covering to dress up a space with concrete. A large lightweight and easy to cut slab.

- Front made of genuine raw concrete
- A simple attachment system
- Quick installation with little handling
- Endless customisation possibilities





# 1 – CHOOSE YOUR PANBETON®

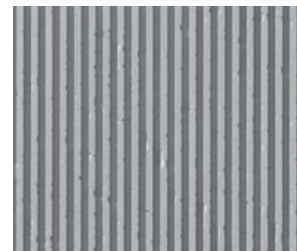
Choose a design & a size among the following designs (or create your own design)

**PANBETON®** | BRUTALISME / *BRUTALISM*  
COLLECTION

NEW



STRIATION  
*Studio LCDA*



2600X900MM  
102.36"X35.43"  
Available in medium  
pitted only

NEW



LINES  
*Studio LCDA*

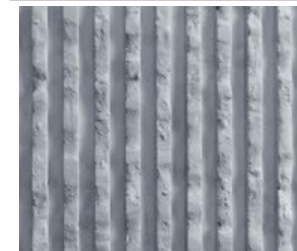


2600X900MM  
102.36"X35.43"  
Available in medium  
pitted only

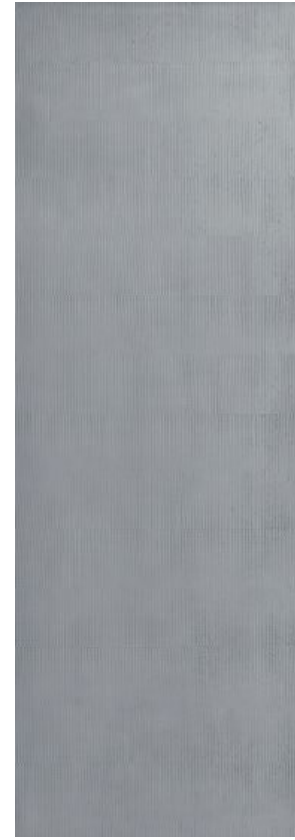
NEW



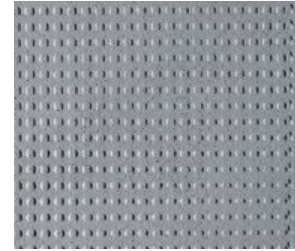
RUGGED  
*Studio LCDA*



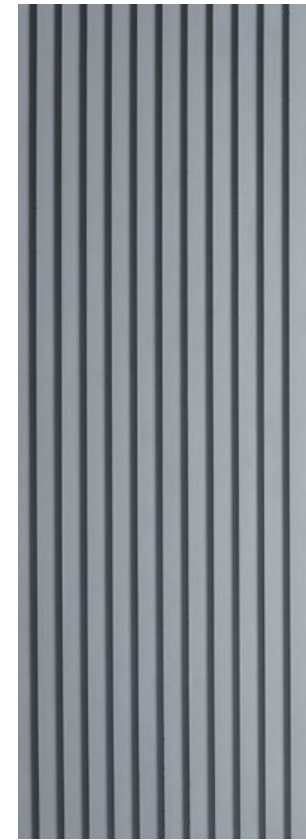
2600X900MM  
102.36"X35.43"  
Available in medium  
pitted only



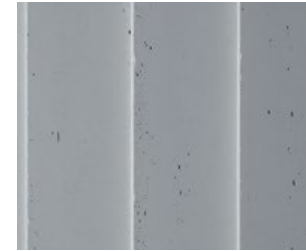
BOUCHARDÉ  
*Patrick Norguet*



2600X900MM  
102.36"X35.43"



FACTORY  
*Victoria Wilmotte*



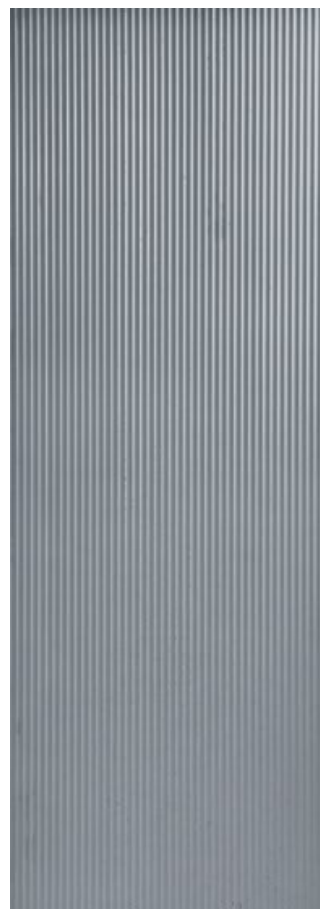
2600X900MM  
102.36"X35.43"  
Available in medium &  
heavy pitted only



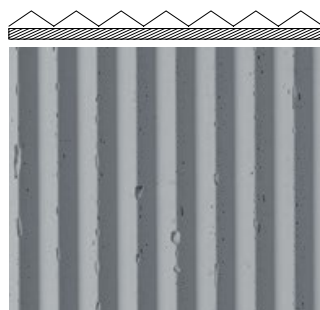
PEIGNÉ  
COMBED  
*Rodolphe Parente*



2600X900MM  
102.36"X35.43"  
Available in medium &  
heavy pitted only



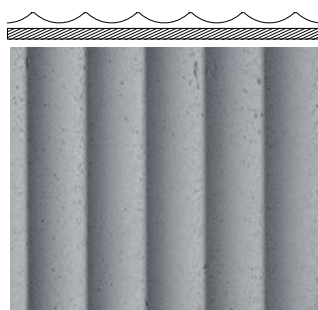
SHAN 山  
*Neri&Hu*



2600X900MM  
102.36"X35.43"  
Available in medium &  
heavy pitted only



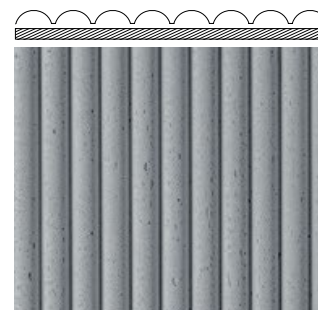
SHUI 水  
*Neri&Hu*



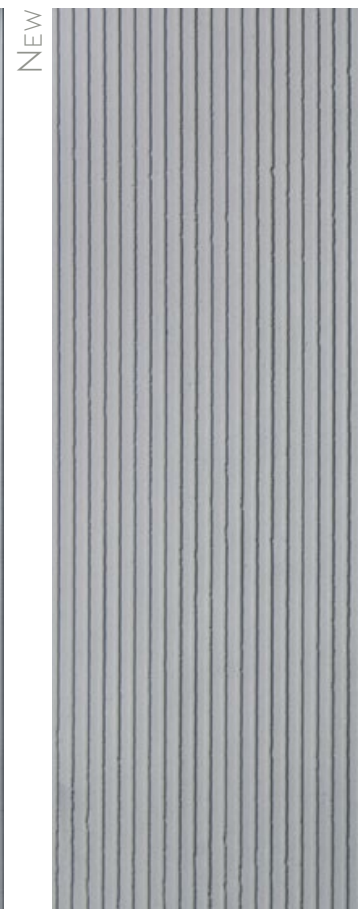
2600X900MM  
102.36"X35.43"  
Available in medium &  
heavy pitted only



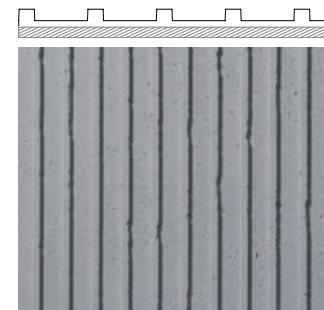
YUN 云  
*Neri&Hu*



2600X900MM  
102.36"X35.43"  
Available in medium &  
heavy pitted only



GÈN 厓  
*Neri&Hu*



2600X900MM  
102.36"X35.43"  
Available in medium &  
heavy pitted only

NEW

# PANBETON® | BRUTALISME / BRUTALISM



CLASSIQUE  
CLASSIC  
*Studio LCDA*



BANCHÉ 2 MM  
SCAFFOLDED 2 MM  
*Matali Crasset*



BANCHÉ 15 MM  
SCAFFOLDED 15 MM  
*Matali Crasset*



RUSTY  
*Studio LCDA*



BARBICAN  
*Terence Woodgate*



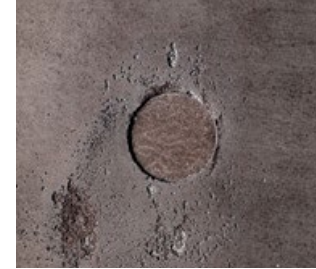
2600X900MM - 102.36"X35.43"  
2600X1200MM - 102.36"X47.24"  
3500X900MM - 137.80"X35.43"  
3500X1200MM - 137.80"X47.24"



2600X900MM - 102.36"X35.43"  
2600X1200MM - 102.36"X47.24"  
3500X900MM - 137.80"X35.43"  
3500X1200MM - 137.80"X47.24"



2600X900MM  
102.36"X35.43"



2600X900MM  
102.36"X35.43"  
*Available in Rusty  
color & medium  
pitted only*



2600X900MM  
102.36"X35.43"



PANBETON®  
COLLECTION — BRUTALISME / *BRUTALISM*



ORIGIN

*Studio LCDA*



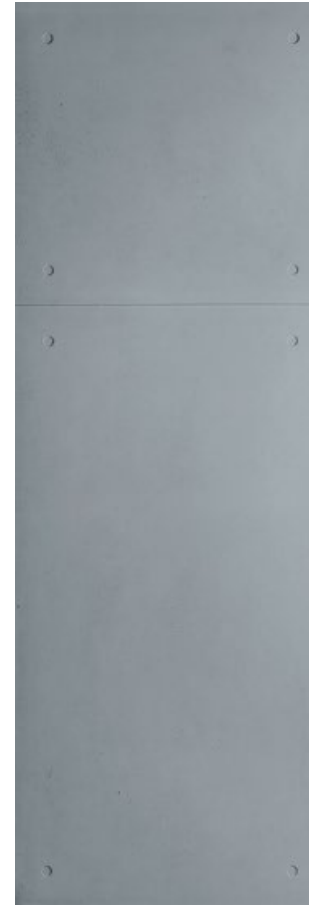
TRIO 15 MM

*Studio LCDA*



TRIO 2 MM

*Studio LCDA*



TOTEM

*Studio LCDA*



RIVET

*Studio LCDA*



2600X900MM  
102.36"X35.43"



2600X900MM  
102.36"X35.43"



2600X900MM  
102.36"X35.43"



2600X900MM  
102.36"X35.43"



2600X900MM  
102.36"X35.43"

PANBETON®  
COLLECTION — BRUTALISME / *BRUTALISM*



CROSS

*Studio LCDA*



DOMINO

*Studio LCDA*



2600X900MM  
102.36"X35.43"



2600X900MM  
102.36"X35.43"





BOIS VERTICAL  
SHUTTERED VERTICAL WOOD  
*Matali Crasset*



BOIS HORIZONTAL  
SHUTTERED HORIZONTAL WOOD  
*Matali Crasset*



LAMES BOIS VERTICALES  
VERTICAL PLANKS  
*Studio LCDA*



TIMBER  
*Jean-Philippe Nuel*



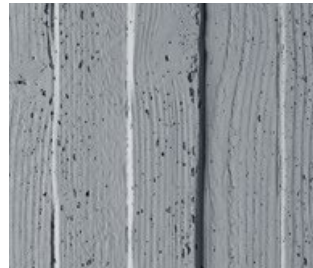
OSB  
*Terence Woodgate*



2600X900MM – 102.36"X35.43"  
2600X1200MM – 102.36"X47.24"  
3500X900MM – 137.80"X35.43"  
3500X1200MM – 137.80"X47.24"



2600X900MM  
102.36"X35.43"



2600X900MM  
3500X900MM  
102.36"X35.43"  
137.80"X35.43"



2600X900MM  
102.36"X35.43"



2600X900MM  
102.36"X35.43"



NEW



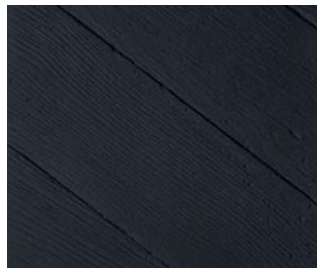
CHEVRONS

*Jean-Philippe Nuel*

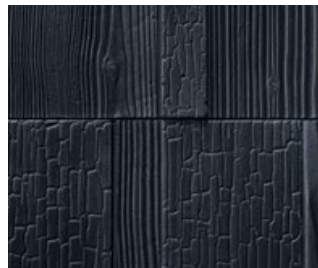


GRAPHITE

*Jean-Philippe Nuel*

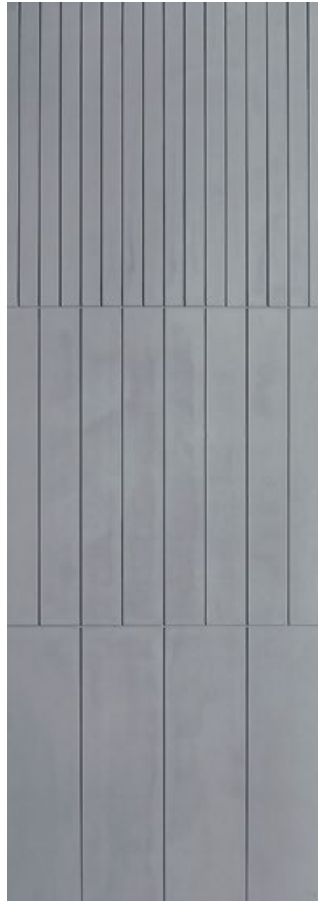


2600X900MM  
102.36"X35.43"



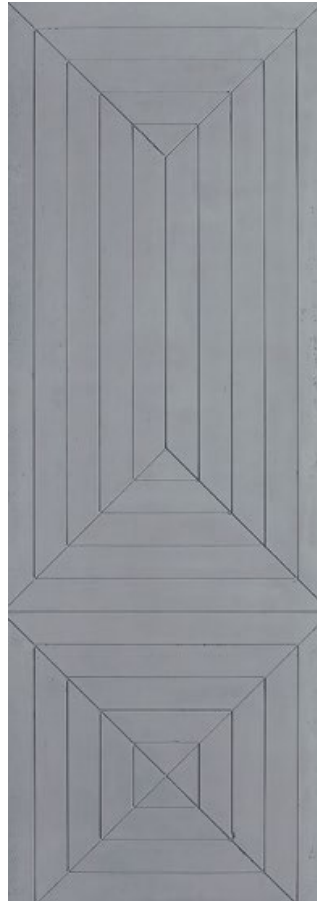
2600X900MM  
102.36"X35.43"  
*Available in medium  
pitted only*





FRAGMENTATION

*Matali Crasset*



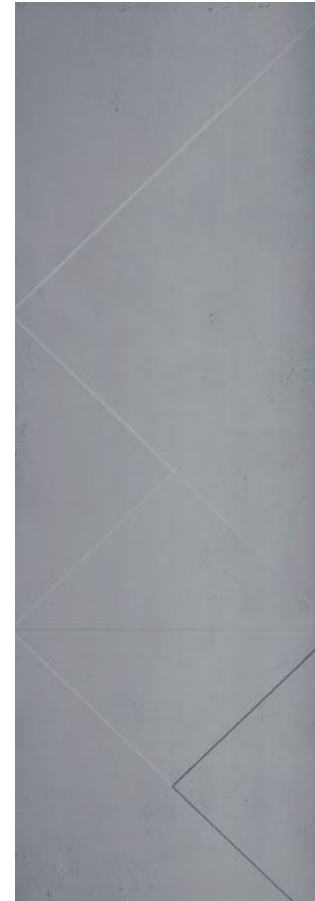
MODERN

*Ich & Kar*



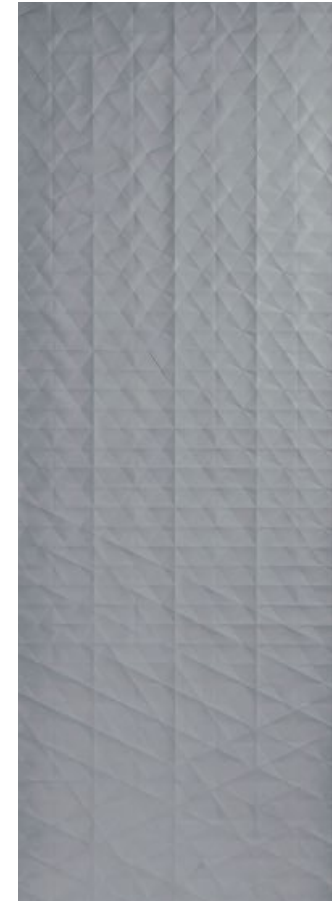
SLATS

*Jean-Marie Massaud*



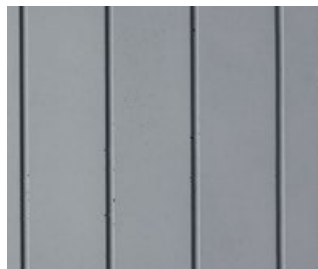
GIOMETRY

*Ora Ito*

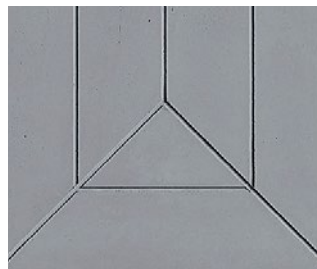


DELICATE

*Normal Studio*



2600X900MM  
102.36"X35.43"



2600X900MM  
102.36"X35.43"



2600X900MM  
3500X900MM  
102.36"X35.43"  
137.80"X35.43"



2600X900MM  
102.36"X35.43"



2600X900MM  
102.36"X35.43"

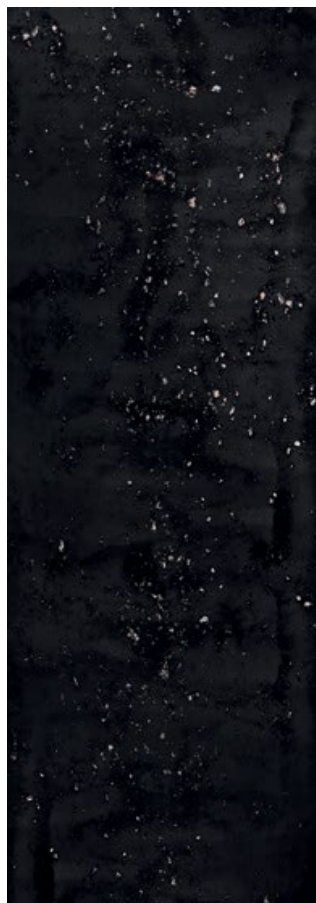




FOUETTÉ  
WHIPPED  
*Rodolphe Parente*



MODELÉ  
FINGERPRINT  
*Rodolphe Parente*



MICA  
*Sebastian Herkner*



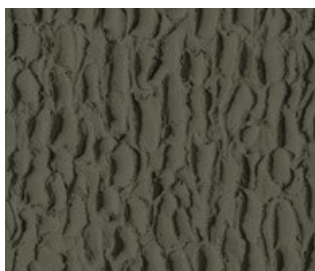
MADE IN HAUSSMANN  
*Matali Crasset*



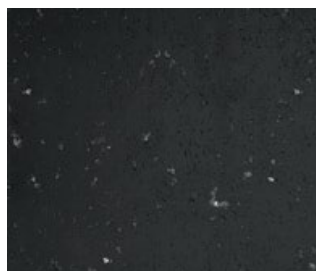
HAUSSMANN MINIMAL  
*Matali Crasset*



2600X900MM  
102.36"X35.43"



2600X900MM  
102.36"X35.43"



2600X900MM  
102.36"X35.43"



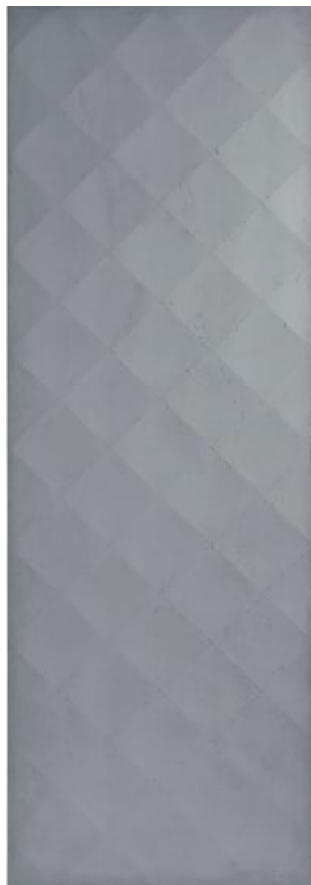
2600X900MM  
102.36"X35.43"



2600X900MM  
102.36"X35.43"



PANBETON®  
COLLECTION — DÉCORATIF / *DECORATIVE*



GRAND CAPITON

*Studio LCDA*



HARMONY

*Patrick Norguet*



2600X900MM  
102.36"X35.43"



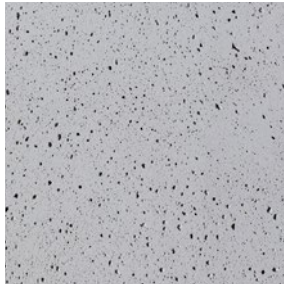
2600X900MM  
102.36"X35.43"



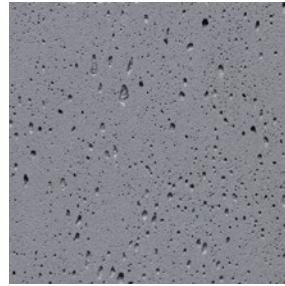
# 1 – CHOOSE YOUR PANBETON®

Choose a design & a size among the following designs (or create your own design)

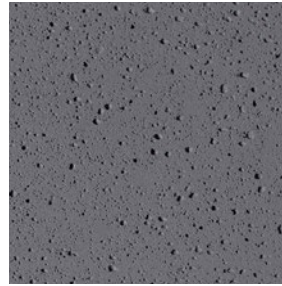
## COLOR\*



**200**  
Natural Grey



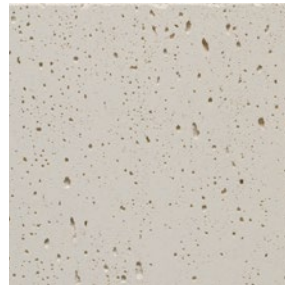
**217**  
Slate Grey



**216**  
Anthracite Grey



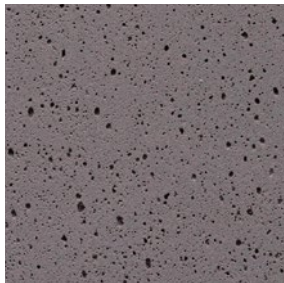
**402**  
White



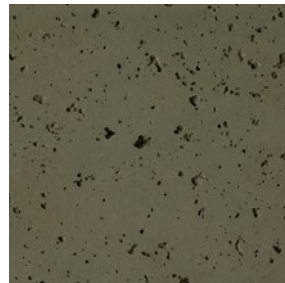
**404**  
Stone



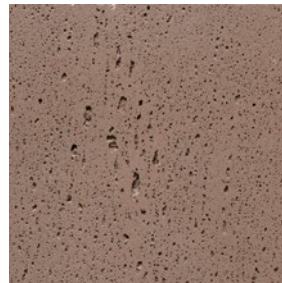
**209**  
Black



**205**  
Brown

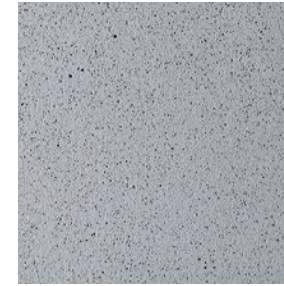


**269**  
Luzerne

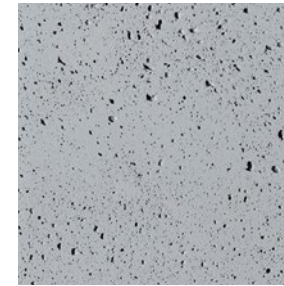


**473**  
Ouarzazate

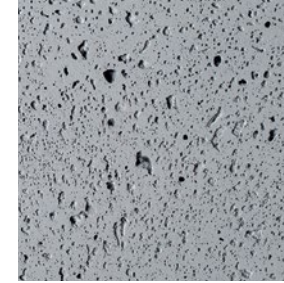
## FINISHES\*



Light Pitted



Medium Pitted



Heavy Pitted

## OPTIONS

→ Bespoke cut available

→ A2-s1d0  
(with specific support :  
gypsum fiber board)

\*Depending on design. Please contact us.

## SEALER TREATMENT - TECHNICAL INFORMATION

PANBETON® SLIMBETON® BETON LEGE®

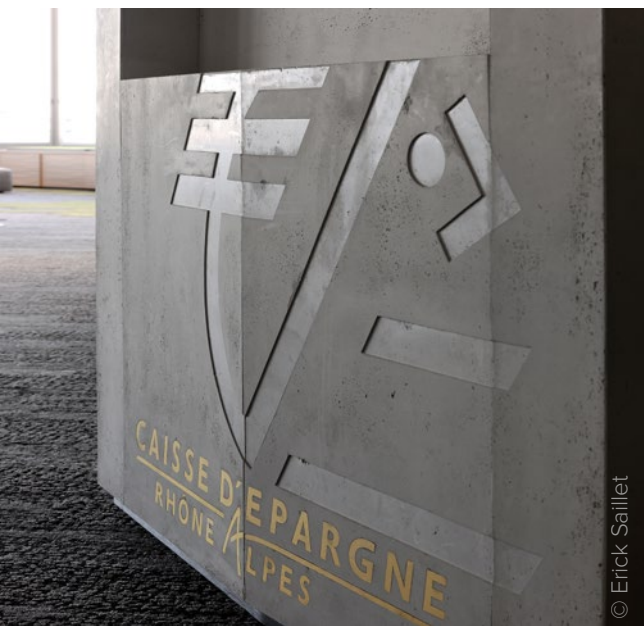
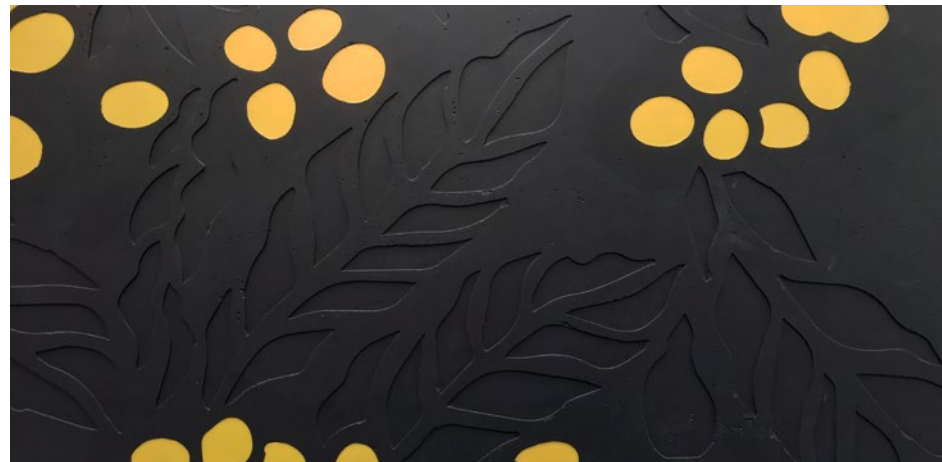
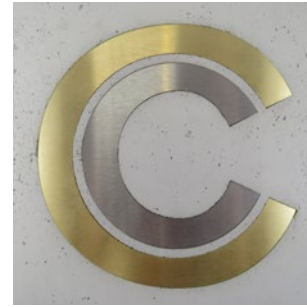
APPLIED AT OUR FACTORY BY OUR DEDICATED TEAM

	APPLICATION	STAIN RESISTANCE	DUST PROTECTION	FINISH	RECOMMENDED FOR	MAINTENANCE
<b>SEALER D</b> <i>Dust + Stain protection</i>	<input checked="" type="checkbox"/> PANBETON® <input checked="" type="checkbox"/> SLIMBETON® <input checked="" type="checkbox"/> BETON LEGE®	★ ★ ☆ ☆ ☆	✓	Mat	Walls and ceilings with high stain risk	Cleaning with a damp microfiber cloth and a neutral cleaning product (non-corrosive) type black soap
<b>SEALER S</b> <i>Reinforced protection sealer</i>	<input checked="" type="checkbox"/> PANBETON® <input checked="" type="checkbox"/> SLIMBETON® <input checked="" type="checkbox"/> BETON LEGE®	★ ★ ★ ☆ ☆	✓	Satin	High traffic areas, Liquid splashing risk	

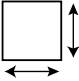
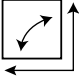
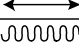





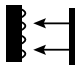
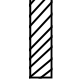






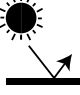



## 4 - BESPOKE CONCRETE CUSTOMIZATIONS

Debossed, simple and with metal, painted, embossed, stipped concrete, gold, silver & copper finishes...



# TECHNICAL DATA

	<b>DIMENSIONS</b>	2600 x 900 mm   102.36" x 35.43" (General tolerance +/- 3 mm   0.12")  Some models are available in following dimensions : 2600 x 1200 mm - 102.36"x47.24" 3500 x 900 mm - 137.80"x35.43" 3500 x 1200 mm - 137.80"x47.24"
	<b>ORTHOGONALITY</b>	+ /- 1.0 %
	<b>SURFACE AREA</b>	+ /- 1.0 %
	<b>THICKNESS</b>	15 à 20 mm   1"
	<b>WEIGHT</b>	35 Kg   77 lbs (+/- 20 %)
	<b>WEIGHT PER SQM</b>	12 à 18 kg/m²   25 lbs to 30 lbs /m²
	<b>COMPOSITION</b>	> Fibre-reinforced concrete > Construction panel
	<b>SEALER TREATMENT</b>	Dust and stain protection by default. Reinforced protection sealer also available
	<b>MOUNTING &amp; BONDING</b>	Glue Hybrifix 550 DEN BRAVEN
	<b>SUBSTRATES</b>	Is glued to all substrates (plasterboard, bricks, breeze-blocks, etc.)

	<b>CUTTING</b>	Diamond blade (continuous-rim). outer corner possible, drilling with diamond-coated hole saw...
	<b>FIRE CLASSIFICATION</b>	> Euroclass B-s1, d0  > [OPTION] A2-s1d0 (with specific support : gypsum fiber board)  > ASTM E84 : Class A Smoke index : 0 Flame spread index : 0
	<b>HEAT RESISTANCE</b>	Up to 60°C   Up to 140 °F
	<b>THERMAL SHOCK</b>	Resistant
	<b>LIGHT RESISTANCE</b>	No impact
	<b>VOC CLASSIFICATION</b>	A+
	<b>ACOUSTIC</b>	Neutral
	<b>EXCLUDED</b>	Exterior, floor, shower stall. Not suitable for direct and continuous contact with water.

## COMPOSITION

Slice view



5 MM  
FIBRE  
CONCRETE

10 MM  
CONSTRUCTION  
PANEL