

PANBETON® FOLD

by Studio LCDA

NEW



Credit photo : Florent Tarnet

CONCRETE LCDA®

PANBETON® FOLD

by Studio LCDA

Inspiré par les plis naturels de luxueuses tentures murales, le relief Fold révèle une harmonie parfaite entre la force élégante de la matière béton et la fluidité d'une ondulation naturelle et sculpturale.

Inspired by the natural pleats of luxurious wall hangings, the Fold design reveals a perfect harmony between the elegant strength of the concrete material and the fluidity of a natural, sculptural undulation.

Au coeur du savoir-faire de Concrete LCDA, Panbeton® est une collection de panneaux en béton fibré haute performance, spécialement conçus pour l'agencement intérieur.

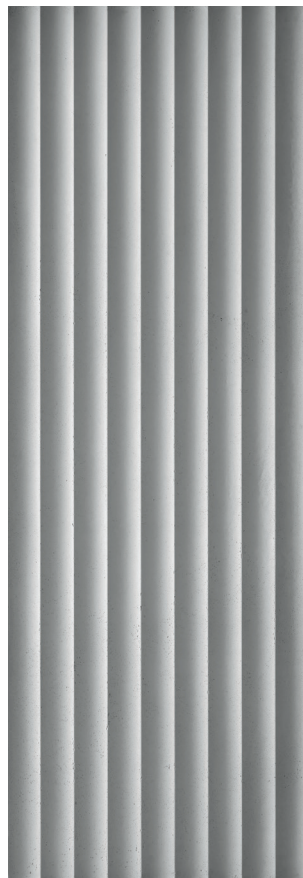
Léger et facile à découper, Panbeton s'applique directement au mur, au plafond ou sur des éléments d'ameublement (mobilier, façades, comptoirs, etc.)

- 40 modèles - 9 couleurs - 3 finitions
- Facile à découper
- Fixation simple et rapide par collage

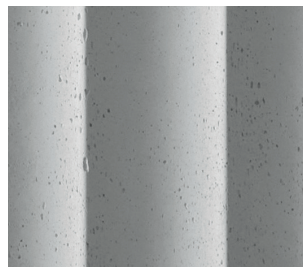
At the heart of Concrete LCDA's expertise, Panbeton® is a collection of fibre-reinforced concrete slabs, specially designed for interiors.

Ultra-lightweight and easy to cut, Panbeton can be bonded directly to walls, ceilings or furniture fixings (fronts, counters, curved surfaces etc.).

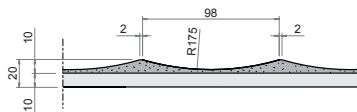
- 40 decorative panels - 9 colours - 3 finishes
- Easy to cut with diamond tools
- Simple and quick installation with adhesive supplied



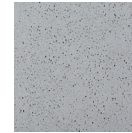
Panneau Entier
Full Size panel



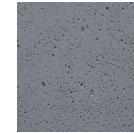
Zoom



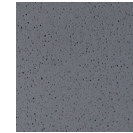
COULEURS / COLORS



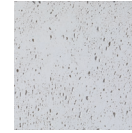
200 - Gris Naturel
200 - Natural Grey



217 - Gris Moyen
217 - Slate Grey



216 - Gris Anthracite
216 - Anthracite Grey



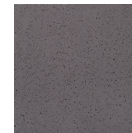
402 - Blanc
402 - White



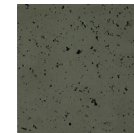
404 - Pierre
404 - Stone



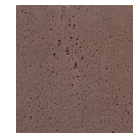
209 - Noir
209 - Black



205 - Marron
205 - Brown

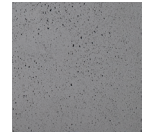


269 - Luzerne
269 - Luzerne

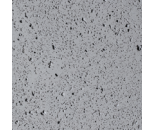


473 - Ourzazate
473 - Ourzazate

FINITIONS / FINISHES




Brut Moyen
Medium Pitted



Brut Fort
Heavy Pitted

CARACTÉRISTIQUES PRODUIT / PRODUCT SPECIFICATION

Composition	Béton fibré haute performance sur panneau de construction / fiber-reinforced concrete onto construction panel
Dimension	2600 x 900 mm
Epaisseur Thickness	+/- 20 mm
Poids Weight	+/- 15kg / m ²
Traitements Sealer	Fixateur poussière et anti-tache (D) Dust & stain protection (D) Option : Hydrofuge renforcé (S) Reinforced sealer (S)
Classement au feu Fire rating	Euroclass Bs1d0 Option : Euroclass A2s1d0 or Class A ASTM
Qualité de l'air intérieur Indoor air quality	
Installation	Collage / Gluing - Hybrifix 550 DEN BRAVEN

CONCRETE LCDA®

contact@concretelcda.com
www.concretelcda.com